

COURAGE

VISION

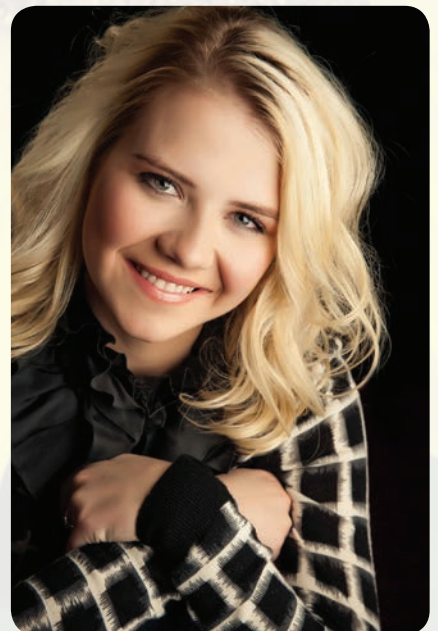
EMPOWERMENT

AWAKENING

COMMUNITY

DEDICATION

PASSION



SPECIAL GUEST
ELIZABETH SMART

2013

WOMEN AGAINST MS LUNCHEON (WAMS)

The Premier Women's Networking Luncheon in the Capital Region is Proud to Present

EMPOWERMENT

WITH SPECIAL GUEST ELIZABETH SMART



PHOTOS BY JOAN HEFFLER, CREATIVE EXPRESSIONS PHOTOGRAPHY

The WAMS event is a fundraising luncheon that creates an inspiring, motivational and empowering environment for women in our region. Additionally, the event acts as a nationwide education and fundraising program for the National MS Society. Today, some 20 National MS Society chapters are hosting WAMS luncheons across the country, drawing 200-700 attendees who come to learn more about multiple sclerosis and give "from the heart" to help friends, family members, neighbors and colleagues. The program has already raised more than \$2.5 million to support the research needed to end the potentially devastating effects of MS.

To benefit the
National MS Society
Upstate New York Chapter



2013

WOMEN AGAINST MS LUNCHEON (WAMS)

The Premier Women's Networking Luncheon in the Capital Region is Proud to Present

Friday, November 1, 2013

Wolferts Roost Country Club

11:30 a.m. – Networking & Celebrity Meet-and-Greet

12:30 p.m. – Luncheon

Join us for an afternoon of professional development, inspiration and exhilaration – a one-of-a-kind event for Capital Region women to benefit the National MS Society!

Women Against MS is proud to present

Elizabeth Smart

The abduction of Elizabeth Smart was one of the most followed child abduction cases of our time. Elizabeth was abducted on June 5, 2002, and her captors controlled her by threatening to kill her and her family if she tried to escape. Fortunately, the police safely returned Elizabeth back to her family on March 12, 2003, after being held prisoner for nine months. Through this traumatic experience, Elizabeth has become an advocate for change related to child abduction, recovery programs and national legislation. Elizabeth triumphantly testified before her captor – and the world – about the very private nightmare she suffered during her abduction, which led to conviction.

Elizabeth is currently involved in the "Elizabeth Smart Foundation". She has helped promote the national AMBER Alert, the Adam Walsh Child Protection & Safety Act, and other safety legislation to help prevent abductions.

Elizabeth's abduction and recovery has motivated, and continues to motivate, parents, law enforcement, and leaders worldwide to focus on children's safety. Her message emphasizes the vigilance of everyday people in finding missing children, the belief that there is always hope, and that we can never stop searching for each and every missing child. Two years ago, Elizabeth worked with the Department of Justice and four other recovered young adults in creating a survivors guide, entitled "You're Not Alone: The Journey from Abduction to Empowerment". This guide is meant to encourage children who have gone through similar experiences to not give up and to know that there is life after tragic events.

Elizabeth's life now is a daily demonstration that it is possible to overcome extreme adversity, by not allowing your past to dictate your future.



EMPOWERMENT

\$5,000 Platinum Corporate Sponsorship

- Premier logo presence in a comprehensive media campaign including PSAs on WNYT News Channel 13 and print ads in the Times Union
- Logo placement in print media
- 10 tickets to attend luncheon
- Logo on WAMS invitation and "Save the Date" card
- Full page ad in program book
- Company logo on table tent
- Logo placement on Upstate New York Chapter website with link to your company web site
- Recognition from the podium at the luncheon
- Opportunity to network with Capital Region business women
- Opportunity to insert coupon advertisement, and promotional item into event gift bags (quantity 400)

*To benefit the
National MS Society
Upstate New York Chapter*



2013

WOMEN AGAINST MS LUNCHEON (WAMS)

The Premier Women's Networking Luncheon in the Capital Region is Proud to Present

Friday, November 1, 2013

Wolferts Roost Country Club

11:30 a.m. – Networking & Celebrity Meet-and-Greet

12:30 p.m. – Luncheon

Join us for an afternoon of professional development, inspiration and exhilaration – a one-of-a-kind event for Capital Region women to benefit the National MS Society!

Women Against MS is proud to present

Elizabeth Smart

The abduction of Elizabeth Smart was one of the most followed child abduction cases of our time. Elizabeth was abducted on June 5, 2002, and her captors controlled her by threatening to kill her and her family if she tried to escape. Fortunately, the police safely returned Elizabeth back to her family on March 12, 2003, after being held prisoner for nine months. Through this traumatic experience, Elizabeth has become an advocate for change related to child abduction, recovery programs and national legislation. Elizabeth triumphantly testified before her captor – and the world – about the very private nightmare she suffered during her abduction, which led to conviction.

Elizabeth is currently involved in the "Elizabeth Smart Foundation". She has helped promote the national AMBER Alert, the Adam Walsh Child Protection & Safety Act, and other safety legislation to help prevent abductions.

Elizabeth's abduction and recovery has motivated, and continues to motivate, parents, law enforcement, and leaders worldwide to focus on children's safety. Her message emphasizes the vigilance of everyday people in finding missing children, the belief that there is always hope, and that we can never stop searching for each and every missing child. Two years ago, Elizabeth worked with the Department of Justice and four other recovered young adults in creating a survivors guide, entitled "You're Not Alone: The Journey from Abduction to Empowerment". This guide is meant to encourage children who have gone through similar experiences to not give up and to know that there is life after tragic events.

Elizabeth's life now is a daily demonstration that it is possible to overcome extreme adversity, by not allowing your past to dictate your future.



EMPOWERMENT

\$3,000 Gold Corporate Sponsorship

- Premier logo presence in a comprehensive media campaign including print ads in the Times Union
- Eight tickets to attend luncheon
- Logo on WAMS invitation as sponsor
- Logo and quarter page ad in program book
- Company logo on table tent
- Logo placement on Upstate New York Chapter website with link to your company web site
- Recognition from the podium at the luncheon
- Opportunity to network with Capital Region business women
- Opportunity to insert coupon advertisement, and promotional item into event gift bags (quantity 400)

*To benefit the
National MS Society
Upstate New York Chapter*



2013

WOMEN AGAINST MS LUNCHEON (WAMS)

The Premier Women's Networking Luncheon in the Capital Region is Proud to Present

Friday, November 1, 2013

Wolferts Roost Country Club

11:30 a.m. – Networking & Celebrity Meet-and-Greet

12:30 p.m. – Luncheon

Join us for an afternoon of professional development, inspiration and exhilaration – a one-of-a-kind event for Capital Region women to benefit the National MS Society!

Women Against MS is proud to present

Elizabeth Smart

The abduction of Elizabeth Smart was one of the most followed child abduction cases of our time. Elizabeth was abducted on June 5, 2002, and her captors controlled her by threatening to kill her and her family if she tried to escape. Fortunately, the police safely returned Elizabeth back to her family on March 12, 2003, after being held prisoner for nine months. Through this traumatic experience, Elizabeth has become an advocate for change related to child abduction, recovery programs and national legislation. Elizabeth triumphantly testified before her captor – and the world – about the very private nightmare she suffered during her abduction, which led to conviction.

Elizabeth is currently involved in the "Elizabeth Smart Foundation". She has helped promote the national AMBER Alert, the Adam Walsh Child Protection & Safety Act, and other safety legislation to help prevent abductions.

Elizabeth's abduction and recovery has motivated, and continues to motivate, parents, law enforcement, and leaders worldwide to focus on children's safety. Her message emphasizes the vigilance of everyday people in finding missing children, the belief that there is always hope, and that we can never stop searching for each and every missing child. Two years ago, Elizabeth worked with the Department of Justice and four other recovered young adults in creating a survivors guide, entitled "You're Not Alone: The Journey from Abduction to Empowerment". This guide is meant to encourage children who have gone through similar experiences to not give up and to know that there is life after tragic events.

Elizabeth's life now is a daily demonstration that it is possible to overcome extreme adversity, by not allowing your past to dictate your future.



EMPOWERMENT

\$2,000 Celebrity Underwriter

- Premier company listing placement in a comprehensive media campaign including print ads in the Times Union
- Six tickets to attend luncheon
- Logo placement on WAMS invitation next to Elizabeth Smart's photo indicating your firm as celebrity underwriter (maximum of four sponsor logos at this level)
- Listing and quarter page ad in program book
- Company name on table tent
- Company listing on Upstate New York Chapter website with link to your company web site
- Recognition from the podium at the luncheon
- Opportunity to network with Capital Region business women
- Opportunity to insert coupon advertisement, and promotional item into gift bags (quantity 400)

*To benefit the
National MS Society
Upstate New York Chapter*



2013

WOMEN AGAINST MS LUNCHEON (WAMS)

The Premier Women's Networking Luncheon in the Capital Region is Proud to Present

Friday, November 1, 2013

Wolferts Roost Country Club

11:30 a.m. – Networking & Celebrity Meet-and-Greet

12:30 p.m. – Luncheon

Join us for an afternoon of professional development, inspiration and exhilaration – a one-of-a-kind event for Capital Region women to benefit the National MS Society!

Women Against MS is proud to present

Elizabeth Smart

The abduction of Elizabeth Smart was one of the most followed child abduction cases of our time. Elizabeth was abducted on June 5, 2002, and her captors controlled her by threatening to kill her and her family if she tried to escape. Fortunately, the police safely returned Elizabeth back to her family on March 12, 2003, after being held prisoner for nine months. Through this traumatic experience, Elizabeth has become an advocate for change related to child abduction, recovery programs and national legislation. Elizabeth triumphantly testified before her captor – and the world – about the very private nightmare she suffered during her abduction, which led to conviction.

Elizabeth is currently involved in the "Elizabeth Smart Foundation". She has helped promote the national AMBER Alert, the Adam Walsh Child Protection & Safety Act, and other safety legislation to help prevent abductions.

Elizabeth's abduction and recovery has motivated, and continues to motivate, parents, law enforcement, and leaders worldwide to focus on children's safety. Her message emphasizes the vigilance of everyday people in finding missing children, the belief that there is always hope, and that we can never stop searching for each and every missing child. Two years ago, Elizabeth worked with the Department of Justice and four other recovered young adults in creating a survivors guide, entitled "You're Not Alone: The Journey from Abduction to Empowerment". This guide is meant to encourage children who have gone through similar experiences to not give up and to know that there is life after tragic events.

Elizabeth's life now is a daily demonstration that it is possible to overcome extreme adversity, by not allowing your past to dictate your future.



EMPOWERMENT

\$1,500 Silver Corporate Sponsorship

- Four tickets to attend luncheon
- Listing on WAMS invitation as sponsor
- Listing and quarter page ad in program book
- Company name on table tent
- Company listing on Upstate New York Chapter website with link to your company web site
- Opportunity to network with Capital Region business women
- Opportunity to insert coupon advertisement, and promotional item into gift bags (quantity 350)

*To benefit the
National MS Society
Upstate New York Chapter*



2013

WOMEN AGAINST MS LUNCHEON (WAMS)

The Premier Women's Networking Luncheon in the Capital Region is Proud to Present

Friday, November 1, 2013

Wolferts Roost Country Club

11:30 a.m. – Networking & Celebrity Meet-and-Greet

12:30 p.m. – Luncheon

Join us for an afternoon of professional development, inspiration and exhilaration – a one-of-a-kind event for Capital Region women to benefit the National MS Society!

Women Against MS is proud to present

Elizabeth Smart

The abduction of Elizabeth Smart was one of the most followed child abduction cases of our time. Elizabeth was abducted on June 5, 2002, and her captors controlled her by threatening to kill her and her family if she tried to escape. Fortunately, the police safely returned Elizabeth back to her family on March 12, 2003, after being held prisoner for nine months. Through this traumatic experience, Elizabeth has become an advocate for change related to child abduction, recovery programs and national legislation. Elizabeth triumphantly testified before her captor – and the world – about the very private nightmare she suffered during her abduction, which led to conviction.

Elizabeth is currently involved in the "Elizabeth Smart Foundation". She has helped promote the national AMBER Alert, the Adam Walsh Child Protection & Safety Act, and other safety legislation to help prevent abductions.

Elizabeth's abduction and recovery has motivated, and continues to motivate, parents, law enforcement, and leaders worldwide to focus on children's safety. Her message emphasizes the vigilance of everyday people in finding missing children, the belief that there is always hope, and that we can never stop searching for each and every missing child. Two years ago, Elizabeth worked with the Department of Justice and four other recovered young adults in creating a survivors guide, entitled "You're Not Alone: The Journey from Abduction to Empowerment". This guide is meant to encourage children who have gone through similar experiences to not give up and to know that there is life after tragic events.

Elizabeth's life now is a daily demonstration that it is possible to overcome extreme adversity, by not allowing your past to dictate your future.



EMPOWERMENT

\$500 Bronze Corporate Sponsorship

- Two tickets to attend luncheon
- Listing on WAMS invitation as sponsor
- Listing in program book
- Company listing on Upstate New York Chapter web site with link to your company website
- Opportunity to network with Capital Region business women

*To benefit the
National MS Society
Upstate New York Chapter*

